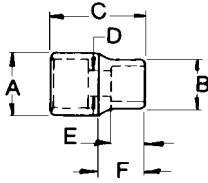


**NEW  
 SIZE\***

**EYE-D**
**6 Point 3/4" Drive Impact Sockets**

Product Number	Opening, Inches	Weight, lbs.	A Drive End	B Wrench End	C Overall Length	D Bolt Clearance	E Wrench Depth	F Length to Shoulder
21-016	1/2	0.62	1.625	1.000	1.812	0.375	0.350	0.563
21-018	9/16	0.62	1.625	1.032	1.812	0.438	0.350	0.563
21-020	5/8	0.65	1.625	1.093	1.812	0.500	0.350	0.563
21-022	11/16	0.62	1.625	1.156	1.875	0.500	0.400	0.563
21-024	3/4	0.63	1.625	1.250	1.875	0.563	0.450	0.563
21-026	13/16	0.71	1.625	1.375	1.907	0.625	0.500	0.563
21-028	7/8	0.74	1.625	1.500	2.000	0.625	0.580	0.563
21-030	15/16	0.75	1.625	1.625	2.000	0.688	0.600	
21-032	1	0.74	1.625	1.625	2.000	0.688	0.750	
21-034	1-1/16	0.76	1.625	1.625	2.062	0.750	0.750	
21-036	1-1/8	0.87	1.625	1.625	2.125	0.875	0.750	
21-038	1-3/16	0.94	1.750	1.875	2.125	1.062	0.750	1.425
21-040	1-1/4	1.10	1.750	2.000	2.125	1.125	0.750	1.425
21-042	1-5/16	1.24	1.750	2.000	2.125	1.125	0.875	1.425
21-044	1-3/8	1.33	1.750	2.125	2.250	1.125	0.875	1.550
21-046	1-7/16	1.44	1.750	2.250	2.250	1.125	0.875	1.550
21-048**	1-1/2	1.59	1.750	2.250	2.250	1.125	1.000	1.550
21-050	1-9/16	1.65	1.750	2.375	2.313	1.125	1.000	1.613
21-052	1-5/8	1.73	1.750	2.438	2.375	1.250	1.000	1.675
21-054	1-11/16	1.79	1.875	2.500	2.375	1.250	1.000	1.675
21-056	1-3/4	1.70	1.875	2.500	2.500	1.250	1.125	1.800
21-058	1-13/16	1.70	1.875	2.625	2.500	1.250	1.125	1.800
21-060	1-7/8	1.80	1.875	2.625	2.625	1.437	1.188	1.925
21-062	1-15/16	2.20	1.875	2.812	2.625	1.437	1.188	1.925
21-064	2	2.40	1.875	2.840	2.750	1.437	1.188	2.050
21-066*	2-1/16	2.45	1.875	2.995	2.750	1.437	1.250	2.050
21-068*	2-1/8	2.50	1.898	2.995	3.043	2.125	1.700	1.990
21-070*	2-3/16	3.00	1.898	3.250	3.000	1.562	1.250	2.300
21-072*	2-1/4	3.30	1.898	3.250	3.125	1.562	1.313	2.425
21-076*	2-3/8	3.50	1.898	3.250	3.483	2.380	2.000	2.360

\*\*Can be used for removal of Budd Wheels.

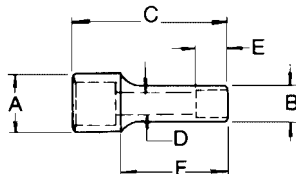
ASME B107.2 Fed'I Spec. GGG-W-660a

**6 Point 3/4" Drive Deep Impact Sockets**

Product Number	Opening, Inches	Weight, lbs.	A Drive End	B Wrench End	C Overall Length	D Bolt Clearance	E Wrench Depth	F Length to Shoulder
21-218	9/16	1.31	1.625	1.000	3.250	0.421	0.750	0.813
21-220	5/8	1.36	1.625	1.094	3.250	0.484	0.750	0.813
21-222	11/16	1.32	1.625	1.156	3.250	0.484	0.750	0.813
21-224	3/4	1.30	1.625	1.250	3.250	0.546	0.750	0.813
21-226	13/16	1.31	1.625	1.313	3.250	0.609	0.875	0.813
21-228	7/8	1.40	1.625	1.500	3.250	0.671	0.875	0.813
21-230	15/16	1.37	1.625	1.625	3.250	0.671	1.000	
21-232	1	1.30	1.625	1.625	3.250	0.671	1.000	
21-234	1-1/16	1.49	1.625	1.750	3.250	0.703	1.000	2.450
21-236	1-1/8	1.44	1.625	1.750	3.250	0.796	1.000	2.450
21-238	1-3/16	1.60	1.625	1.875	3.250	0.796	1.000	2.450
21-240	1-1/4	1.90	1.750	2.000	3.250	0.828	1.063	2.450
21-242	1-5/16	1.94	1.750	2.000	3.375	0.953	1.063	2.575
21-244	1-3/8	2.03	1.750	2.125	3.500	0.953	1.125	2.700
21-246	1-7/16	2.21	1.750	2.250	3.500	1.061	1.125	2.700
21-248**	1-1/2	2.30	1.750	2.250	3.500	1.078	1.250	2.700
21-250	1-9/16	2.40	1.750	2.395	3.483	1.560	1.250	2.600
21-252	1-5/8	2.44	1.750	2.438	3.500	1.560	1.313	2.700
21-254	1-11/16	3.02	1.875	2.500	3.500	1.560	1.313	2.700
21-256	1-3/4	2.20	1.875	2.500	3.625	1.560	1.375	2.825
21-258	1-13/16	2.20	1.875	2.625	3.625	1.560	1.375	2.825
21-260	1-7/8	2.50	1.875	2.625	3.625	1.560	1.438	2.825
21-262	1-15/16	2.70	1.875	2.812	3.625	1.560	1.428	2.825
21-264	2	2.90	1.875	2.840	3.750	1.560	1.500	2.950

\*\*Can be used for removal of Budd Wheels.

ASME B107.2 Fed'I Spec. GGG-W-660a


**EYE-D**
